



# Versa Director

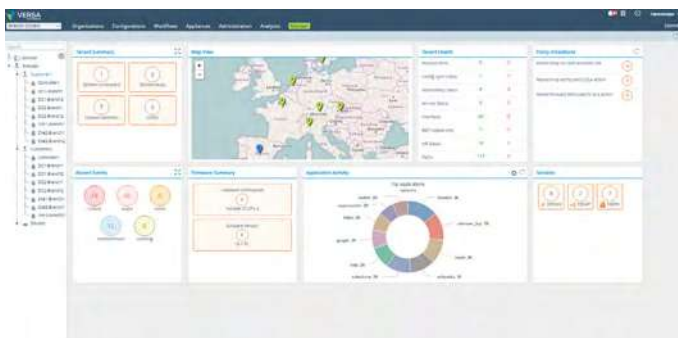
## Product Description

Versa Director is Versa Networks' virtualization and service creation platform that simplifies the creation, automation and delivery of services using Versa WAN edge software, FlexVNF. Versa Director provides the essential management, monitoring and orchestration capabilities needed to deliver Versa's Secure Cloud IP architecture network and security software services. Services supported by Versa include routing and advanced connectivity to direct traffic across multilink WAN access and simplify control for SD-WAN with embedded advanced security.

Versa Director provides single-pane-of-glass management for connectivity and services. It scales to thousands of end customers or organizations through hierarchical multi-tenancy and role-based administrative capabilities. Combined with Versa FlexVNF WAN edge software, Versa Director provides complete VNF infrastructure lifecycle management for bare

metal and virtual machine environments, from deployment and configuration to ongoing monitoring and change management of Versa and third party VNF-based services with automatic actions such as auto-healing and auto-scaling. Versa Director also provides a rich set of interfaces for effective integration with third party products and services.

Versa Director supports service definitions including Versa and third party service components, enabling flexible service chain creation and deployment. In addition, utilizing open and widely available protocol and API formats allows for tight integration with operations and business systems. The result is rapid delivery and simplified ongoing management of Versa-based services, from basic connectivity to advanced SD-WAN and branch security.



Versa Director Tenant Level Monitoring Dashboard



Versa Director SD-WAN Appliance Level Monitoring Dashboard

## FEATURE SUPPORT DETAILS

### Policy

Centralized policy management – policylocking, versioning

CRUD operations on users, roles, capabilities

VNF placement support using resource pools

### S2S tunnels to Enterprise DC

VNF life cycle management

uCPE cloudinit support for VNF instantiation

Hierarchical Template-based provisioning

FlexVNF configuration management, backup, restore, archive, rollback

Hierarchical multi-tenancy support and tenant management

Service catalogs, subscription plans for tenants – specify flavors, policies

Service orchestration

Rest APIs for all operations

FlexVNF management using industry standard NetConf (RFC 6241)

Web-based graphical user interface (GUI)

### Administration

Inventory management

Software management/upgrades

Client and secure API management for third party integration

User-management and AAA integration – Radius/LDAP/TACACS+

Role-based access control

High availability (Active/Standby only) and disaster recovery

Configuration audit logs

Licensing and usage reporting

SSO (Single-Sign-On) support via SAML

Licensing and Entitlement management

### Monitoring

FlexVNF monitoring – System, Cluster, Interface, Alarms

Service monitoring – SNMP MIBs, counters, statistics

Auto-healing

AMQP based notifications

### Service Chaining Support

Service chaining policy definition for FlexVNFs and third party VNFs

### Deployment Options

Bare metal

Virtual machine

Public Cloud (AWS, Azure)

### Licensing and usage reporting

VMware vCloudDirector, vCenter

OpenStack, VMware Integrated OpenStack

Bare metal services with local cloud abstraction

Amazon Web Services cloud API Integration

Microsoft Azure cloud API Integration

### Third Party Overlay Integration

VMware NSX, Nokia Nuage, Open Contrail, OpenDaylight (ODL)

### OSS/BSS and Orchestration Integration

Amdocs NCSO, NEC NetCracker, Ciena BluePlanet, Ubiquite, Cisco NSO, Ericsson ECM,

## SYSTEM REQUIREMENTS

Versa Director supports both bare metal & VM deployments

Recommended Sizing Requirements for Versa Director										
Qty of Branches	Qty of Tenants	Deployment Option	OS	Processor	Servers	Cores	Storage Capacity	Storage (HDD) type	DRAM	Network ports per CPU
Upto 2500	500	Application on Ubuntu (Ubuntu Package)	Ubuntu 14.04	Intel Xeon 64 bit	2 x 1 Socket Server	16 cores per socket	512 GB	SSD Preferred	64 GB per socket	2
Upto 1000	200					8 cores per socket	256 GB			
Upto 500**	100	Virtual Machine						16 GB per socket		

\*\* Resource requirements above pertain to per Versa Director node.

## ABOUT VERSA NETWORK

Versa Networks is a leading innovator in the SD-WAN and SD-Security market. Versa's solutions enable service providers and large enterprises to transform enterprise WAN's to achieve unprecedented business advantages. Versa's carrier-grade cloud-native software platform provides unmatched agility, cost savings and flexibility, transforming the business of networking. The company is backed by premier venture investors Sequoia, Mayfield, Artis Ventures and Verizon Ventures. For more information, visit <https://www.versa-networks.com>. Follow us on Twitter [@versanetworks](https://twitter.com/versanetworks).